

Church Grants Masterclass

COMMUNITY AUDITS



What you will learn today

What are Community Audits?



Who or what is your community?



How to run a Community Audit

What is a Community Audit?

A Community Audit is a systematic study of what your community really needs.

Why are they important?

- ▶ Knowing the genuine needs of the community
- ▶ Evidencing the need within funding application



A Community
Audit is also

..... a two-way
process in
communication to:

- ▶ Find out what people think and feel about your church
- ▶ Discover what is going on in your communities
- ▶ Learn more about the impact of Covid-19
- ▶ Understand how best the Church can be part of a practical solution to address genuine problems and needs

Using evidence within your story

Think about the

- ▶ What
- ▶ How
- ▶ Why



Your community



Who or what is your
community?



Why does their opinion
matter?

Who should be consulted?



Why does
this opinion
matter?

- ▶ “How does your project involve your community?”
- ▶ “Describe the role your beneficiaries have in the planning and delivery of your services”
- ▶ “How will your beneficiaries have a role in shaping your project?”

Why does this opinion matter?

- ▶ Start with the people not the project
- ▶ The project is the solution to the need



How to complete a Community Audit?



Paper questionnaires



Face to Face



Telephone



Online/ E-mail



Post

Types of questions

Open questions:

“Tell us what is the most exciting thing about living in...”

Closed questions:

“Have you been inside St John’s in the last 5-years?”

Types of questions

Tick boxes

Below is a list of activities/services. Please rate each on **A) quality and capacity of service** and **B) level of need/importance**. 1=Very poor/low level of need 5=Excellent/high level of need

Activity/service provision		1	2	3	4	5
Pre - school provision	A					
	B					
Facilities for 5-12 year olds	A					
	B					
Activities for 13-19 year olds	A					
	B					

Small spaces

1. What do you think are the three best things about living in your area? Please explain why for each (please list)

1.
2.
3.

Case study

St Mary the Virgin, Primrose Hill

Carrying out a Community Audit is the first step in preparing to fundraise.



Using the data collected and interrogating it to inform the fundraising is the bit that counts!



What next?

Look at the data...

What is it telling you?

Can you see any emerging trends?

How many? Are you surprised by this?

Too many? Can these trends be merged into themes? Example:

- Young people
- Homelessness
- Safety
- Loneliness

Is further research required?

How to complete a Community Audit?

- Contact details
opt-in

How should
you use this
information?



Your story



Your bids

Complying with GDPR

The things
you need
to consider

PECR:

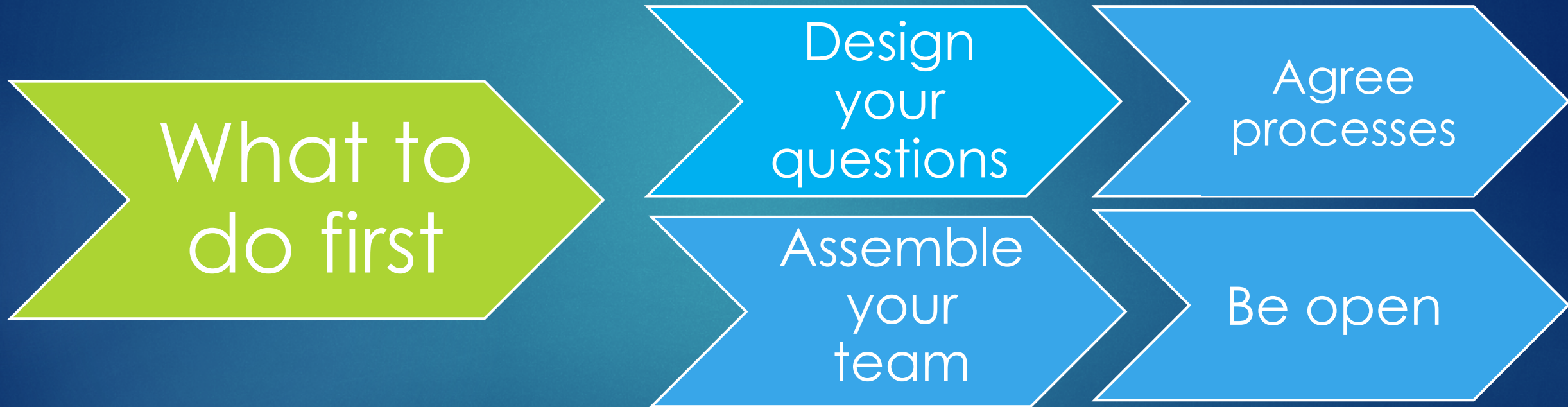
The Privacy and Electronic
Communications
Regulations

Be secure

Data
protection
Act

Opt-ins

Taking the first steps



What does good practice look like?

The type of data

The amount of data

The form of data

The results of the data- what is it telling you?

Your conclusions

Your actions

A quick recap.....

Look at the data.

What conclusions can be drawn from it?

How can this inform your future actions?

In a hurry to start fundraising?

Have a look at the 2021 Church Grants Webinars for more information.



Planning a Capital Project



Writing a Case for Support



Raising Money from Trusts and Foundations



Writing a Grant Application

Good luck!

- ▶ **Property Services Department**

- ▶ <https://exeter.anglican.org/resources/buildings-land/>

- ▶ **Church Grants (subscription paid by Diocese of Exeter)**

- ▶ <https://exeter.churchgrants.co.uk/>

- ▶ **Parish Fundraising Support**

- ▶ <https://exeter.anglican.org/resources/church-buildings/finance/>

